

405-375-0786
1-800-375-8903

www.pldi.net



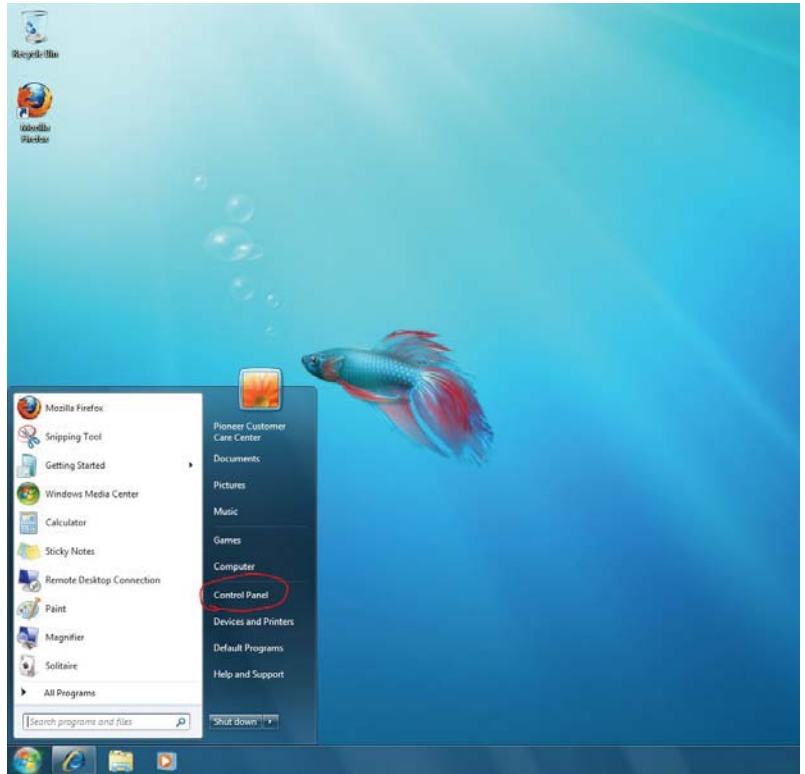
HIGH-SPEED INTERNET

Set Up

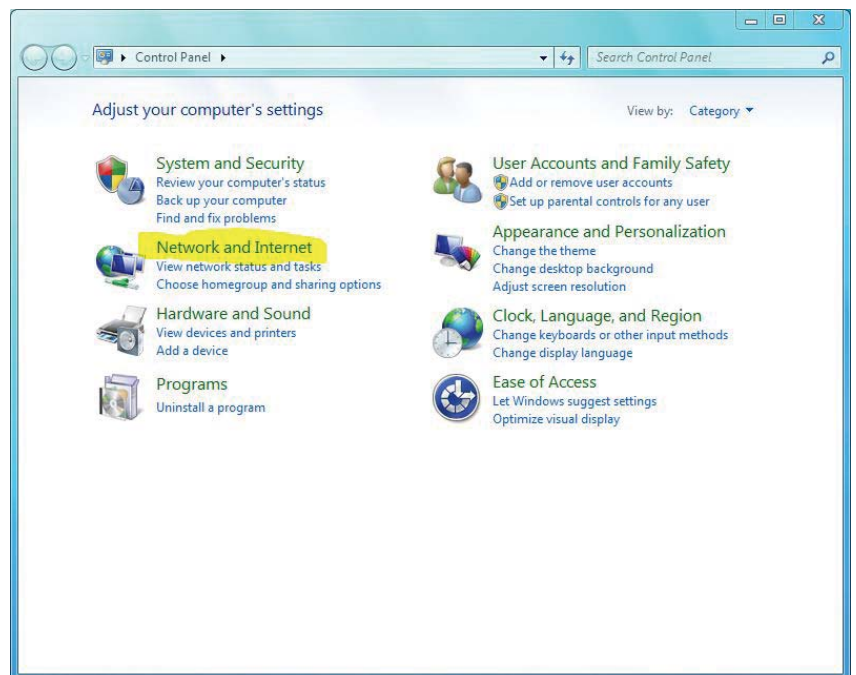
**for
Windows 7
Users**

High-Speed Internet set up for Windows 7 users

1. To set up a Pioneer High-Speed Internet connection on Windows 7, click on the **Start/Windows** button as shown below. Then click on **Control Panel**.

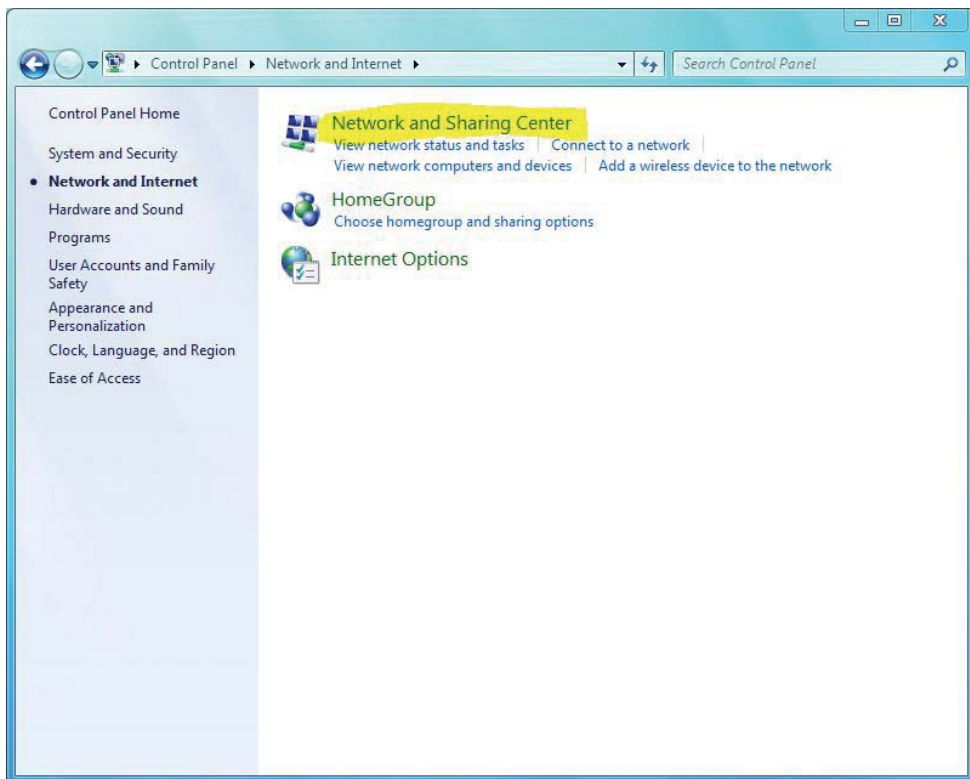


2. In the **Control Panel**, click on **Network and Internet**.

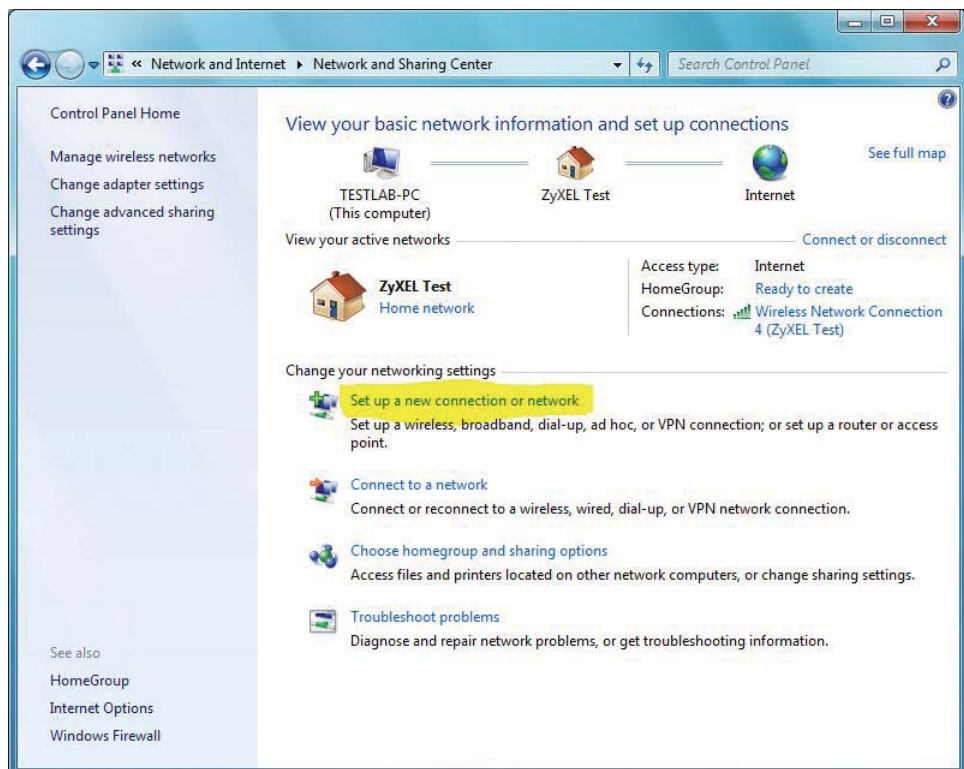


High-Speed Internet set up for Windows 7 users

3. In the **Network and Internet** page, click on **Network and Sharing Center**.

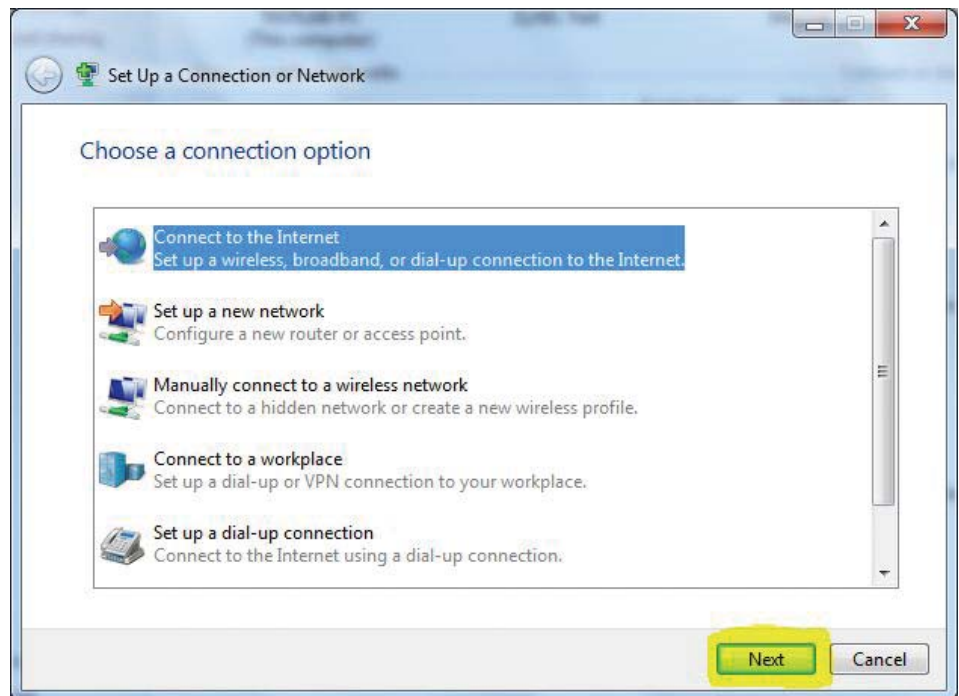


4. Click on **Set up a new connection or network**.

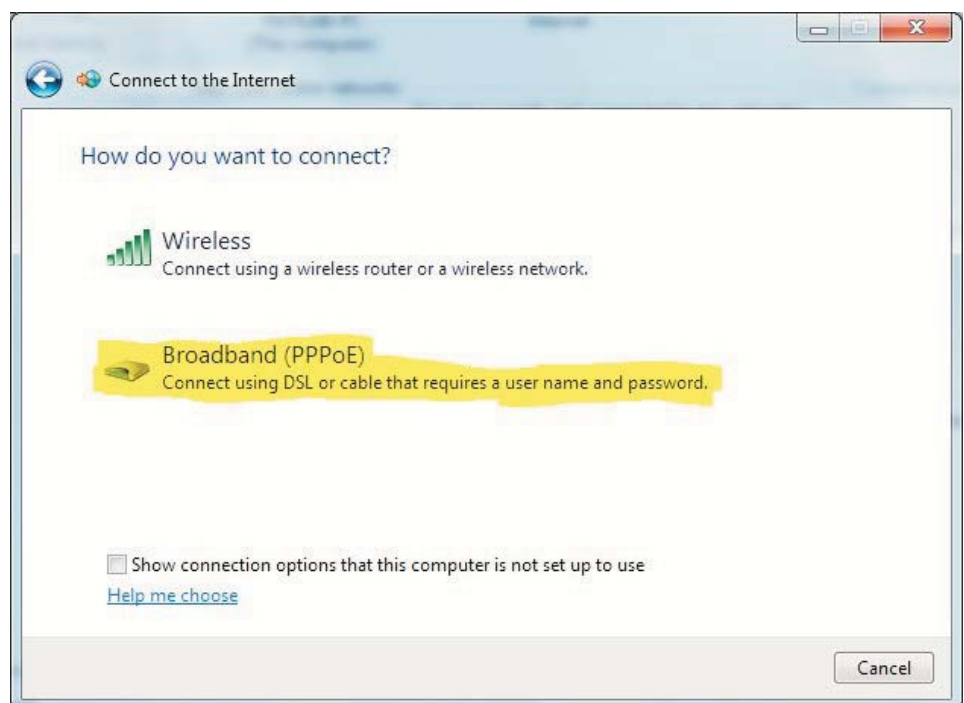


High-Speed Internet set up for Windows 7 users

5. The next step is to click on **Connect to the Internet**, then click **Next**.

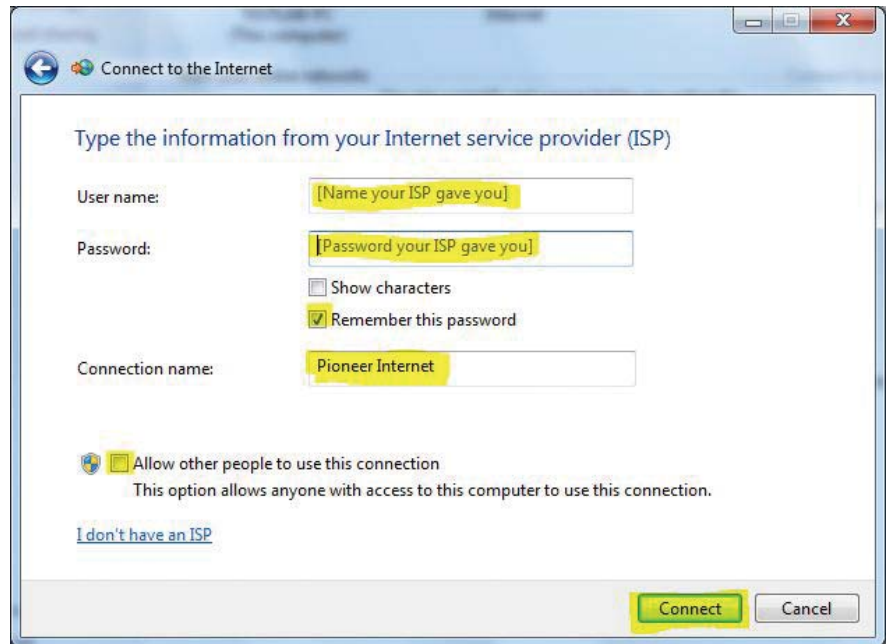


6. Click on **Broadband (PPPoE)**.

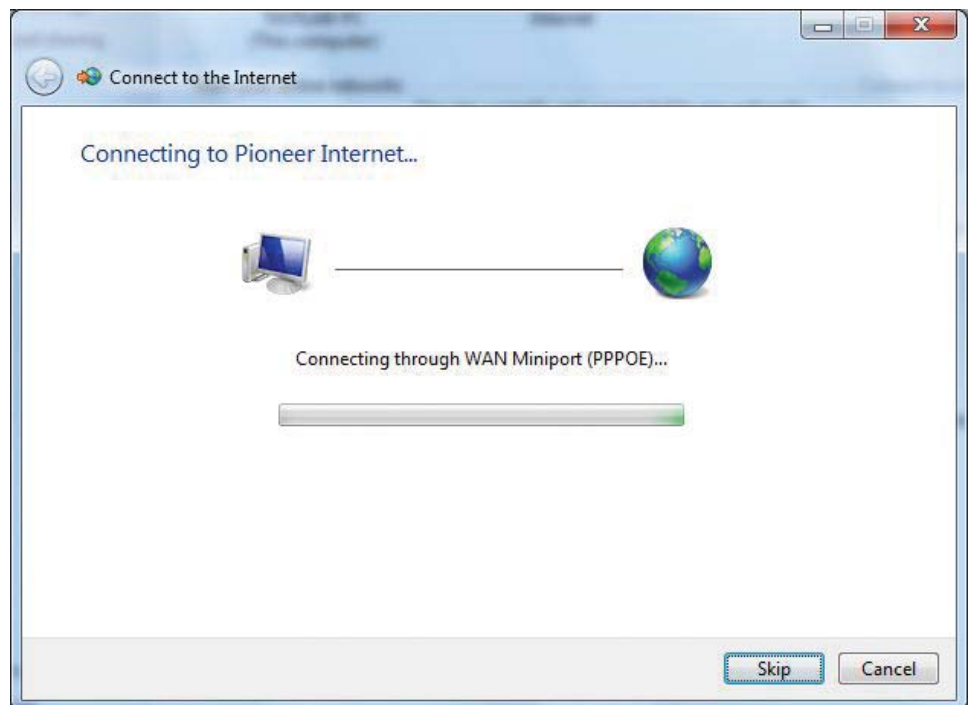


High-Speed Internet set up for Windows 7 users

7. On this screen, type in your user name followed by @pldi.net in the **User name** text box, then type your password in the **Password** text box where it says, “(Password your ISP gave you).” Also check the box **Remember this password**, and type Pioneer Internet in the **Connection name** text box. Check the box **Allow other people to use this connection**. Click **Connect**.

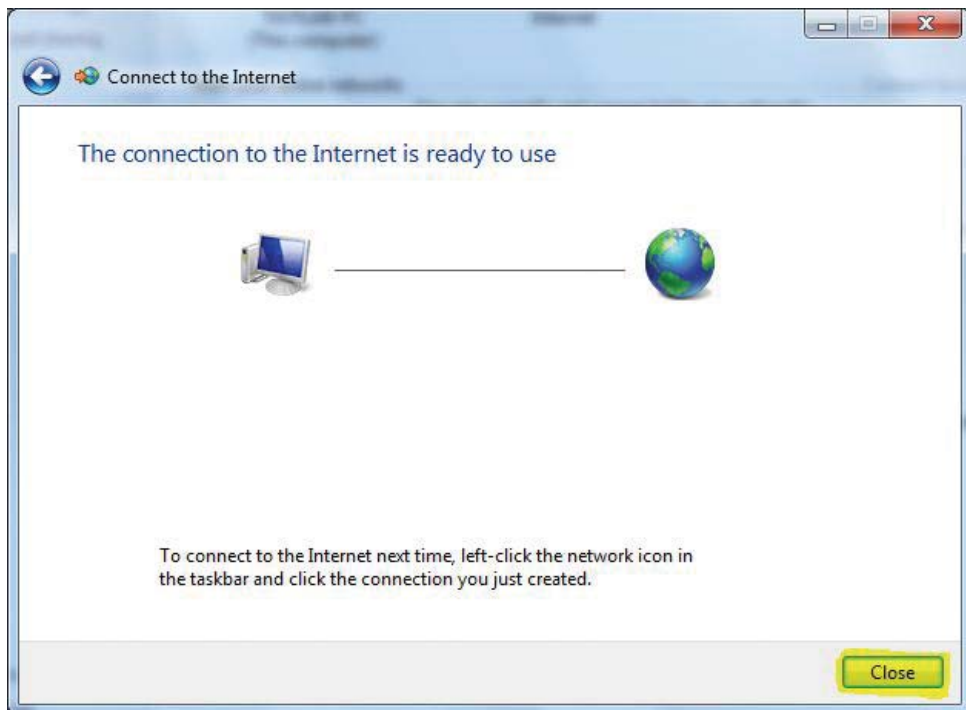


8. You should now see **Connecting to Pioneer Internet. . .** as shown.



High-Speed Internet set up for Windows 7 users

9. If the connection was successful you will see this screen.

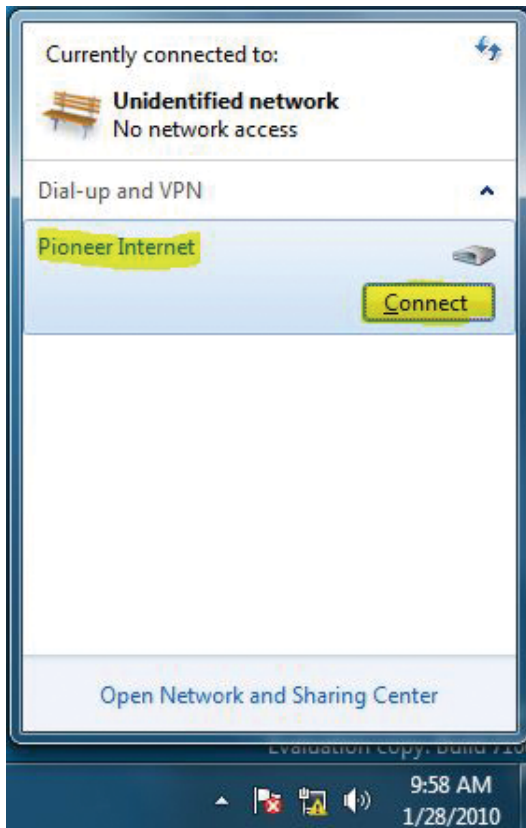


10. To connect to the Internet click on the icon located on the right side of the taskbar.



High-Speed Internet set up for Windows 7 users

11. Next, click on **Pioneer Internet** and then **Connect**.



12. Again, click on **Connect**. You should now be connected to the Internet.

