

405-375-0786  
1-800-375-8903

[www.pldi.net](http://www.pldi.net)



# HIGH-SPEED INTERNET

Connection and  
Windows Mail  
Set Up

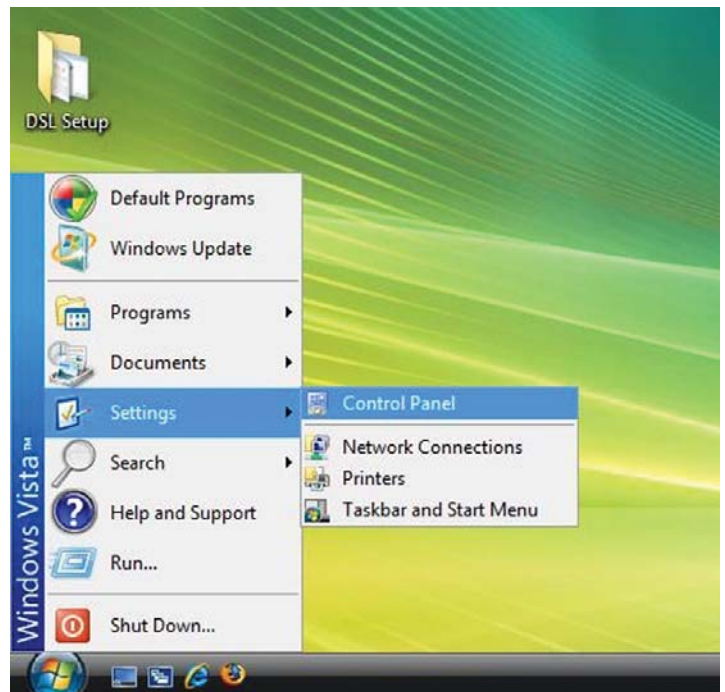
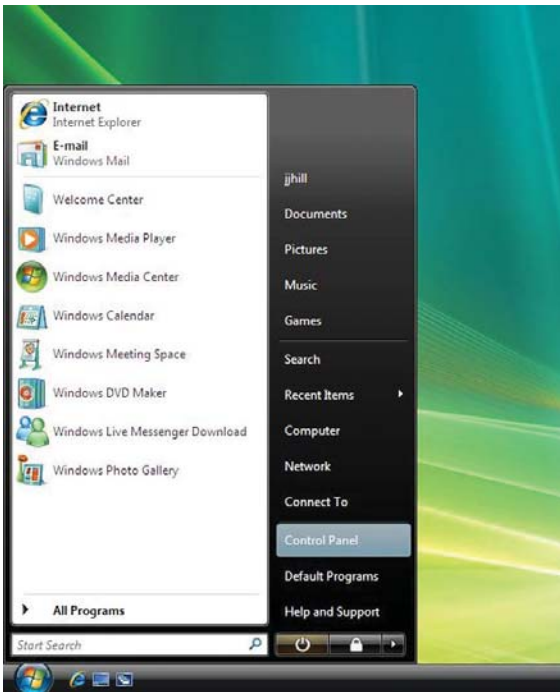
**for  
Windows Vista  
Users**

# High-Speed Internet set up for Windows Vista users

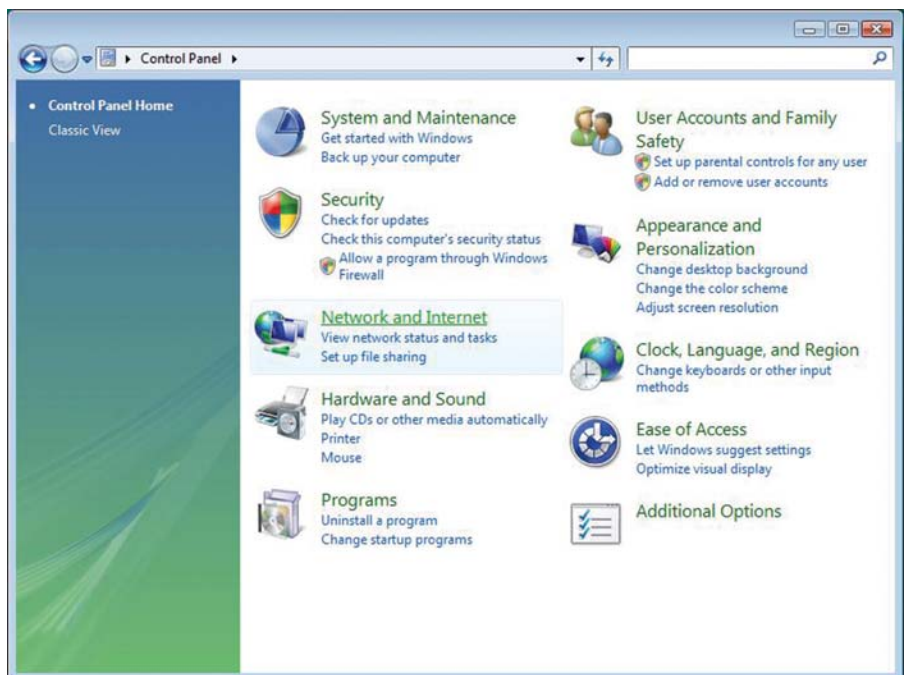
1. To set up a Pioneer High-Speed Internet connection on Windows Vista, click on the **Start/Windows** button as shown below. (Note: There are two different Start menu configuration options.)

If the **Start** menu appears like the one on the left, click on **Control Panel**.

If the **Start** menu appears like the one on the right, click **Settings**, then **Control Panel**.

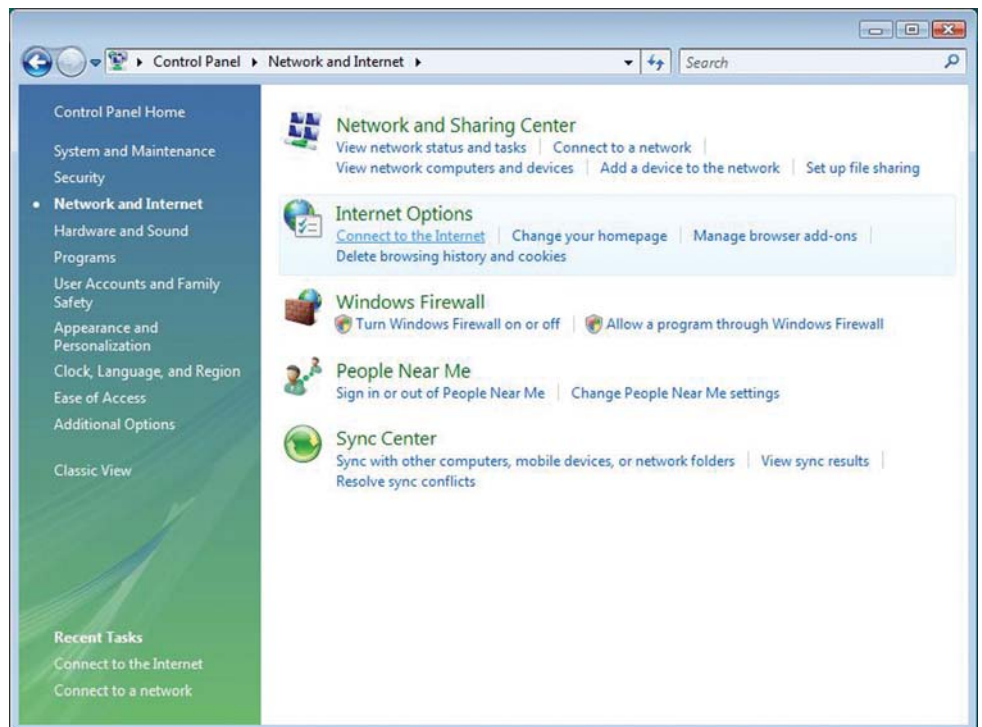


2. In the **Control Panel**, click on **Network and Internet**. (Note: Some computer configurations may not show **Network and Internet** due to the different layout possibilities of the Control Panel. If the Control Panel *does not* appear as the one to the right, continue on to Step 4 for Classic View).

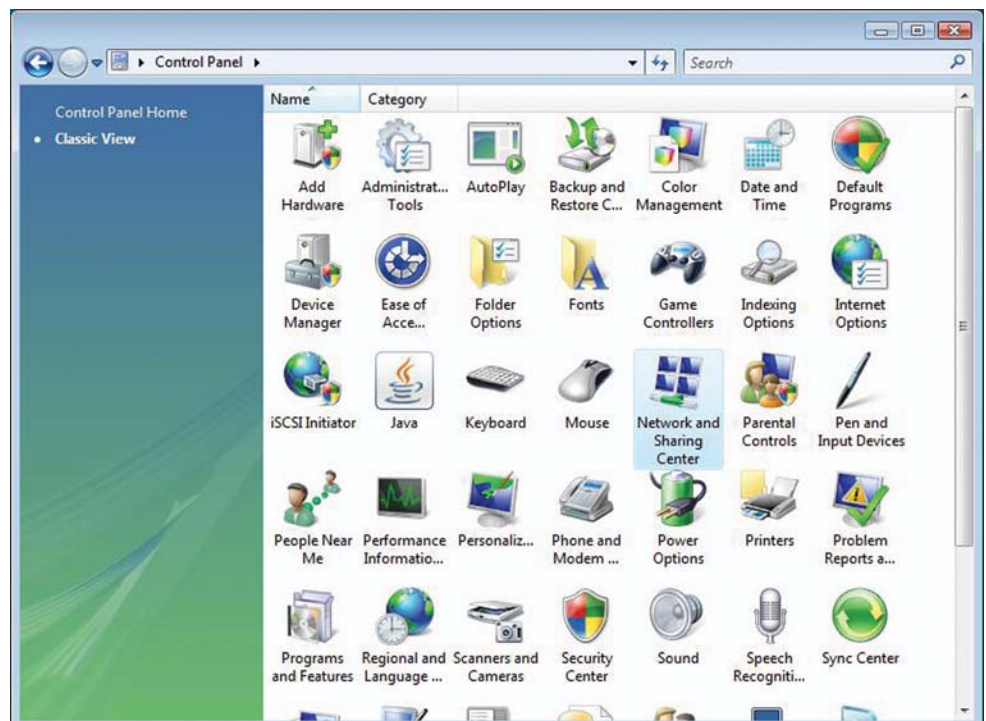


## High-Speed Internet set up for Windows Vista users

3. In the **Network and Internet** page, click on **Connect to the Internet** under **Internet Options**, and continue on to Step 7.



4. In Classic View, click on **Network and Sharing Center**.

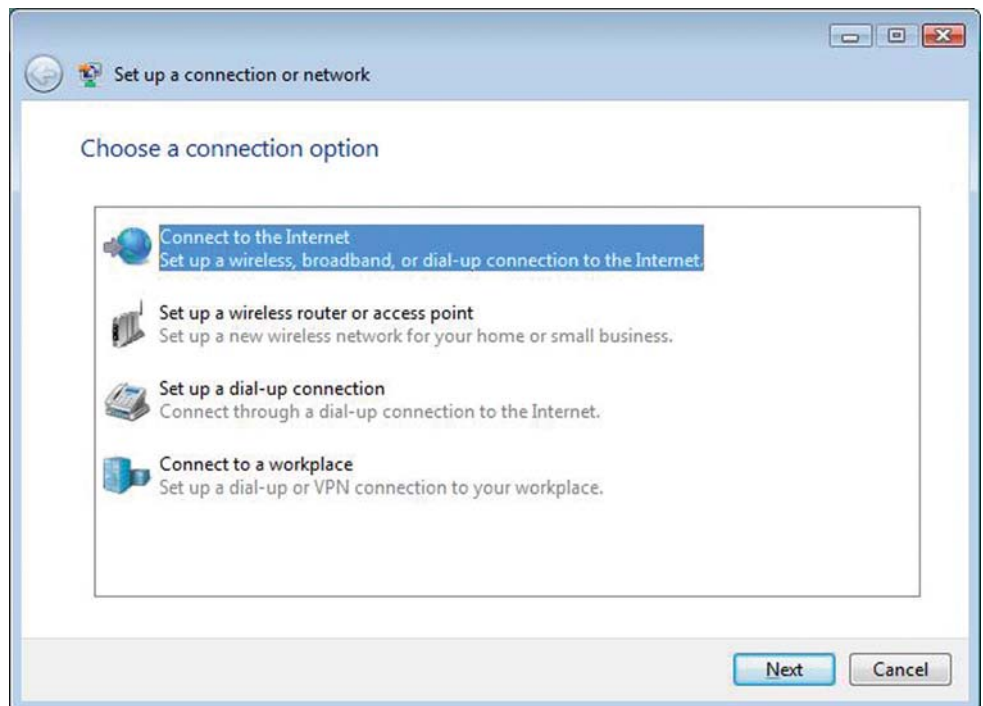


# High-Speed Internet set up for Windows Vista users

5. Click on **Set up a connection or network** on the left side of the screen.

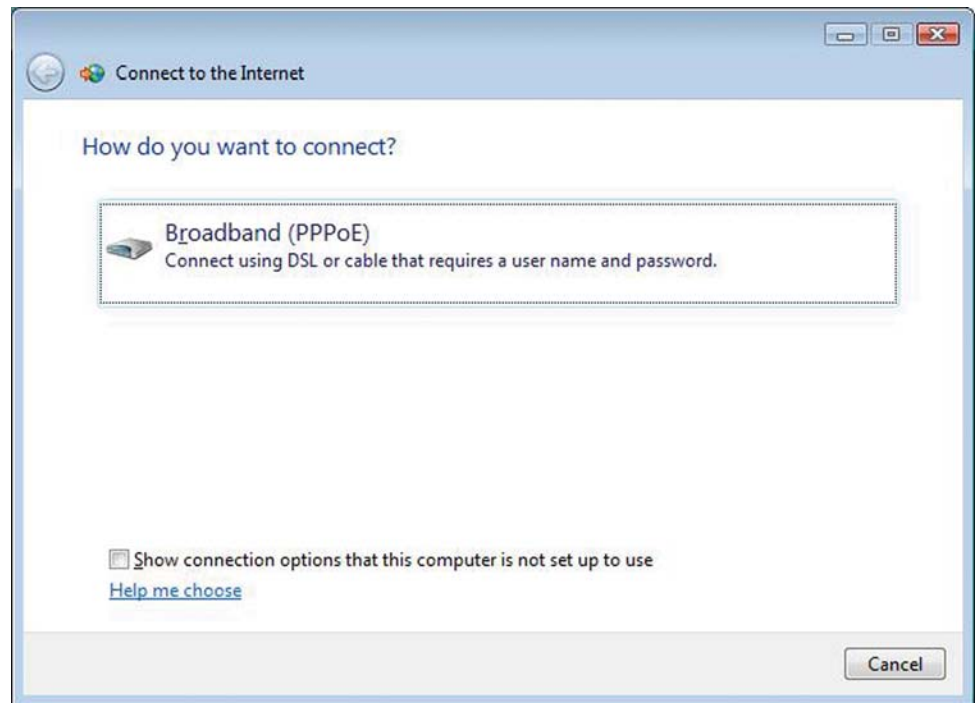


6. The next step is to click on **Connect to the Internet**, then click **Next**.

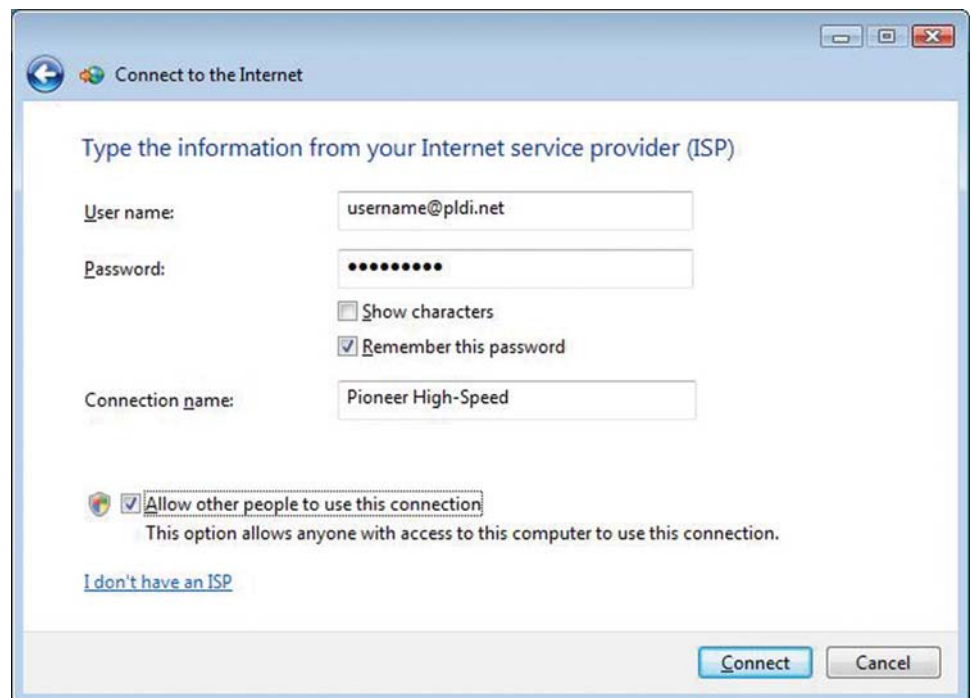


## High-Speed Internet set up for Windows Vista users

7. Click on **Broadband (PPPoE)**.



8. On this screen, type in your **user name** followed by **@pldi.net** in the **User name** text box, then type your password in the **Password** text box. Also check the box **Remember this password**, and type **Pioneer High-Speed** in the **Connection name** text box. Also check the box **Allow other people to use this connection**. At the bottom of the page, click **Connect**.

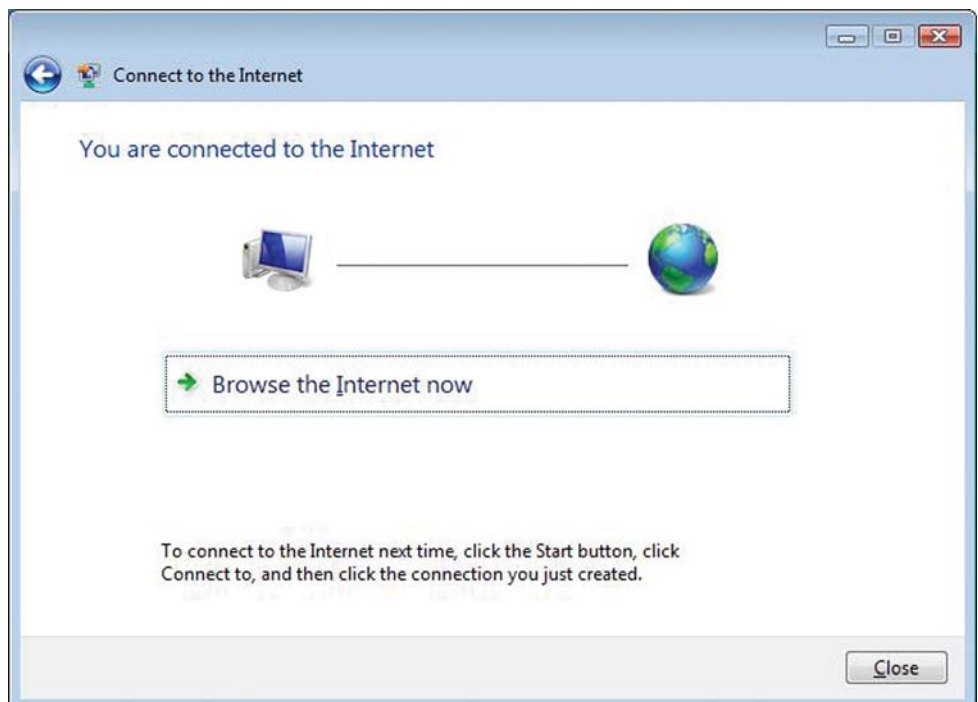


## High-Speed Internet set up for Windows Vista users

9. You should now see **Testing your Internet connection. . .** as shown.

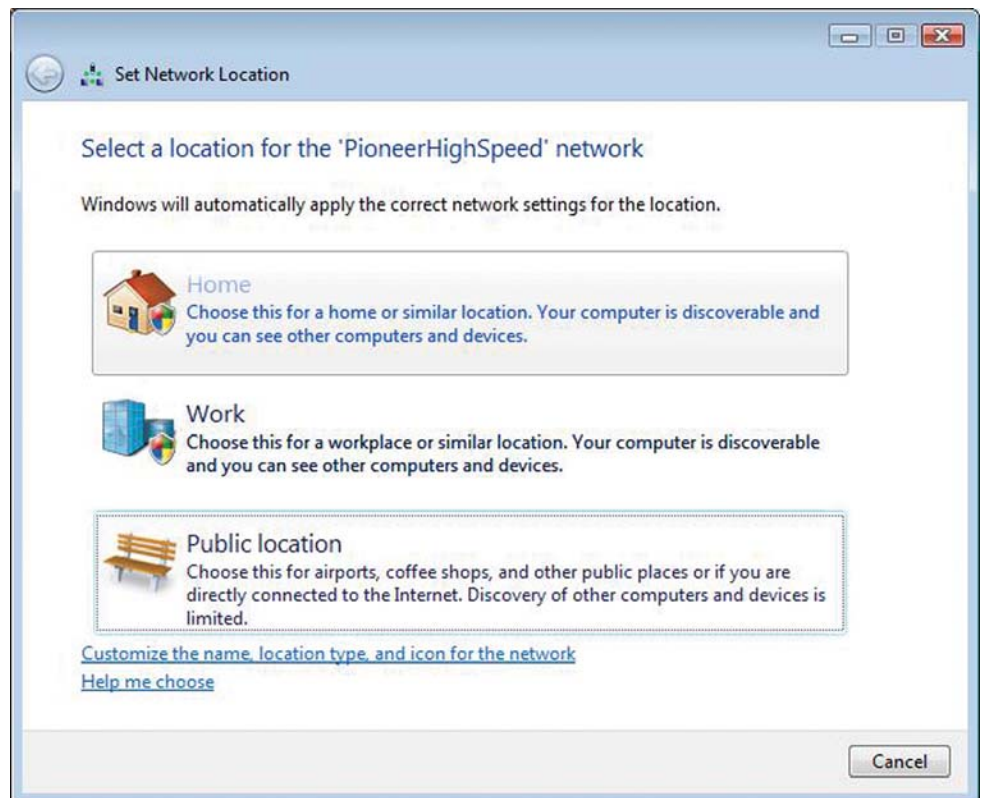


10. If the connection was successful you will see this screen. Click **Browse the Internet now**, and it will open up your Web browser.

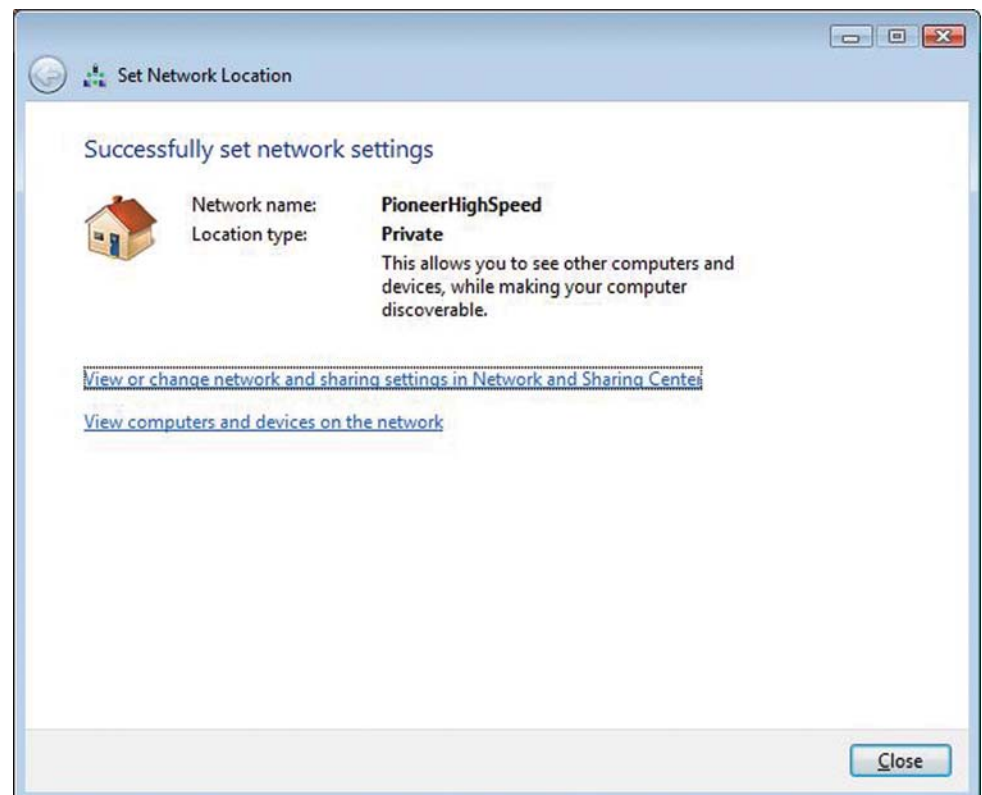


## High-Speed Internet set up for Windows Vista users

11. After you click on **Browse the Internet now**, you will have another option to select what kind of network your computer is on. This option will be up to you and how your computer is connected.



12. This is the last step toward surfing the Web with your new Pioneer High-Speed Internet connection. This is a status page that indicates successful network settings. You can close this screen and go straight to surfing the Web. Thank you for choosing Pioneer Internet!

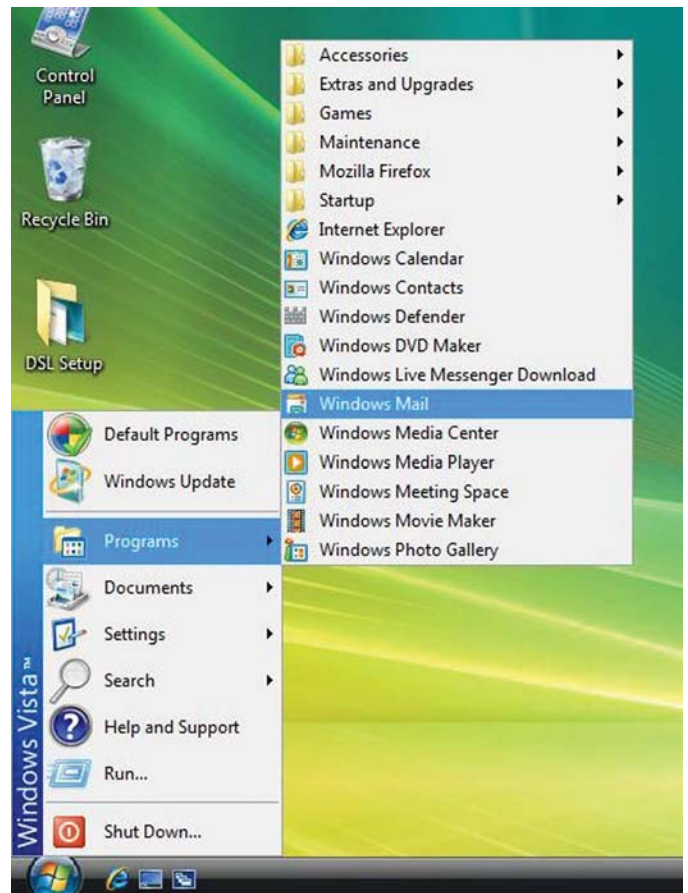
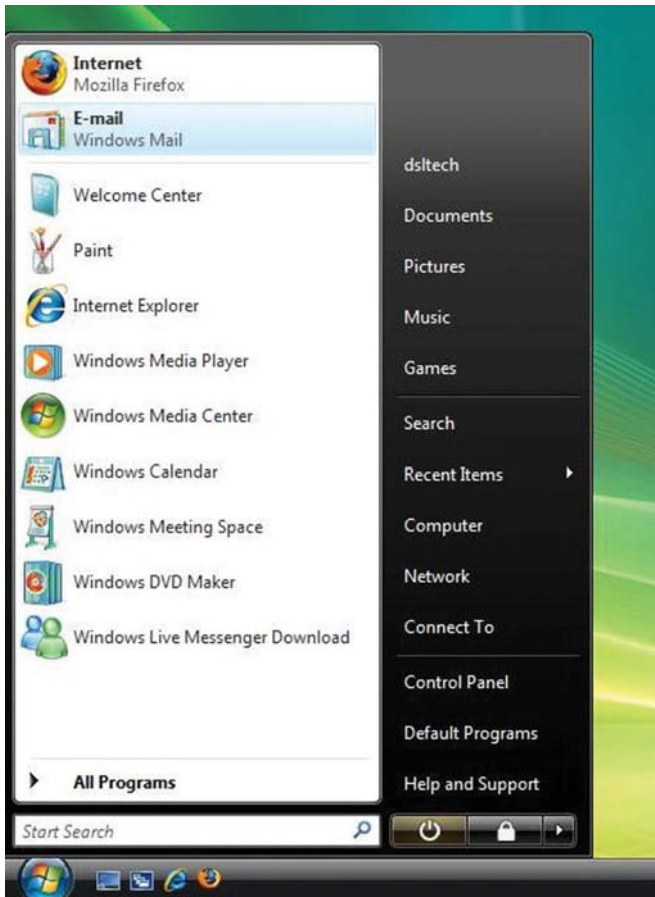


# Windows Mail Set Up for Windows Vista Users

1. To set up Windows Mail in Windows Vista, click on the **Start/Windows** button as shown below. (Note: there are two different **Start** menu configuration options.)

If the **Start** menu appears like the one on the left (standard **Start menu**), click on **E-mail Windows Mail**.

If the **Start** menu appears like the one on the right (**Classic View**), click on **Programs** and then **Windows Mail**.

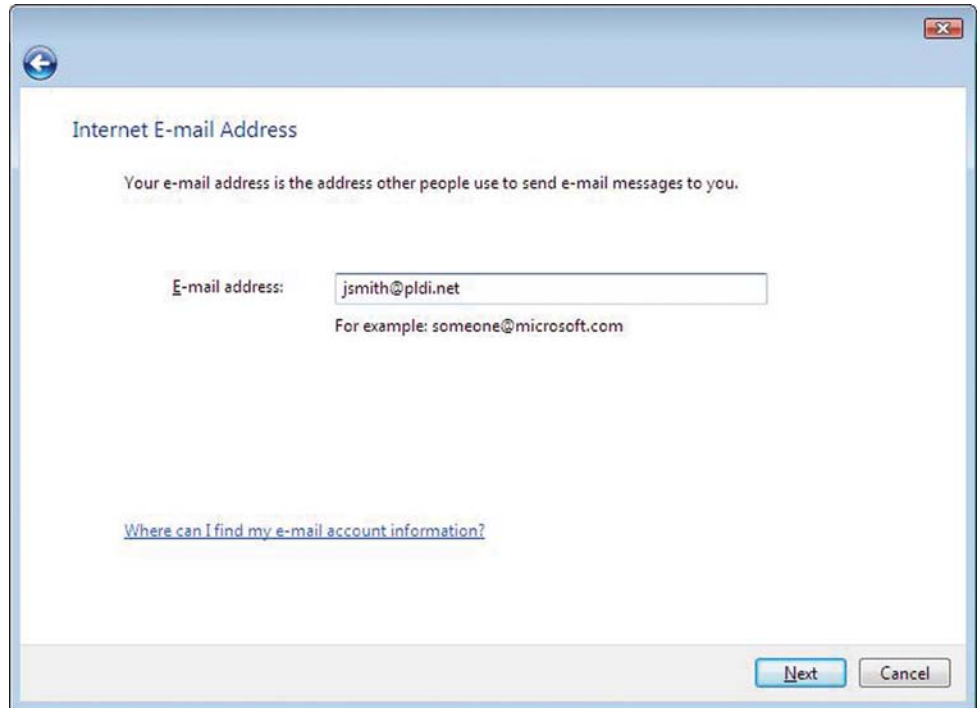


2. After you click on your **Windows Mail** client, a window will appear prompting you for your **Display name** (example: John Smith) as shown here. Enter your name and click **Next**.

A screenshot of the 'Your Name' dialog box in Windows Mail. The dialog box is titled 'Your Name' and contains the following text: 'When you send e-mail, your name will appear in the From field of the outgoing message. Type your name as you would like it to appear.' Below this text is a text input field labeled 'Display name:'. Below the input field is the text 'For example: John Smith'. At the bottom of the dialog box, there is a link that says 'Where can I find my e-mail account information?' and two buttons: 'Next' and 'Cancel'.

## Windows Mail Set Up for Windows Vista Users

3. Next you will enter your **E-mail address** (example: jsmith@pldi.net). After you have entered your e-mail address, click **Next**.



Internet E-mail Address

Your e-mail address is the address other people use to send e-mail messages to you.

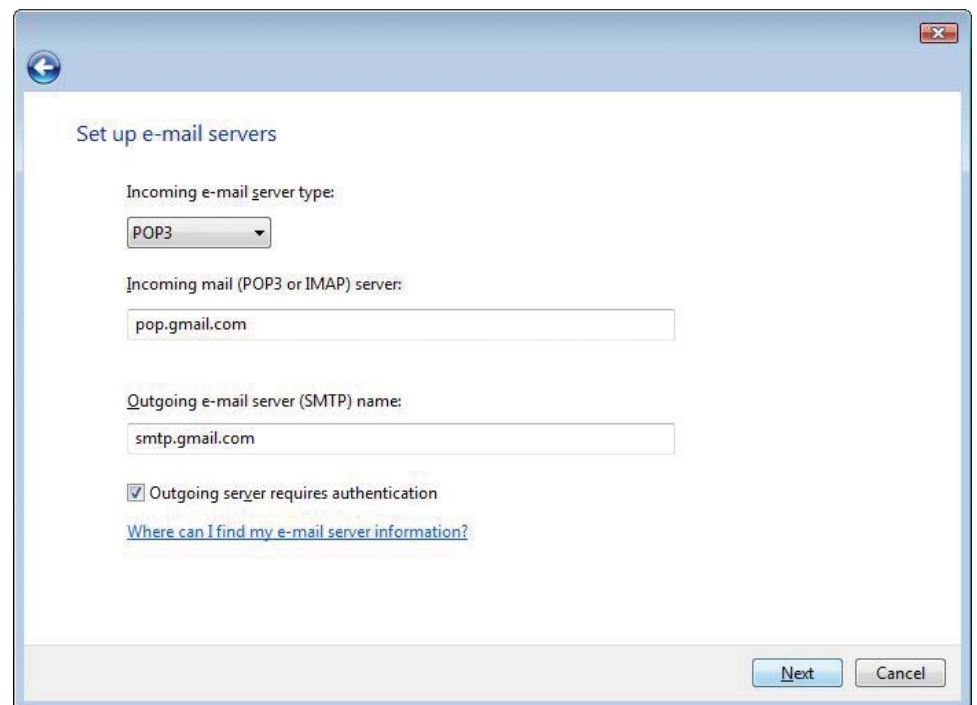
E-mail address:

For example: someone@microsoft.com

[Where can I find my e-mail account information?](#)

Next Cancel

4. In this step you will need to **Set up e-mail servers**. The **Incoming e-mail server type** is **POP3**, **Incoming mail (POP3 or IMAP) server** is **pop.gmail.com** and the **Outgoing e-mail server (SMTP) name** is **smtp.gmail.com** as shown at the right. Also, check the box **Outgoing server requires authentication**. After you complete this step, click **Next**.



Set up e-mail servers

Incoming e-mail server type:

Incoming mail (POP3 or IMAP) server:

Outgoing e-mail server (SMTP) name:

Outgoing server requires authentication

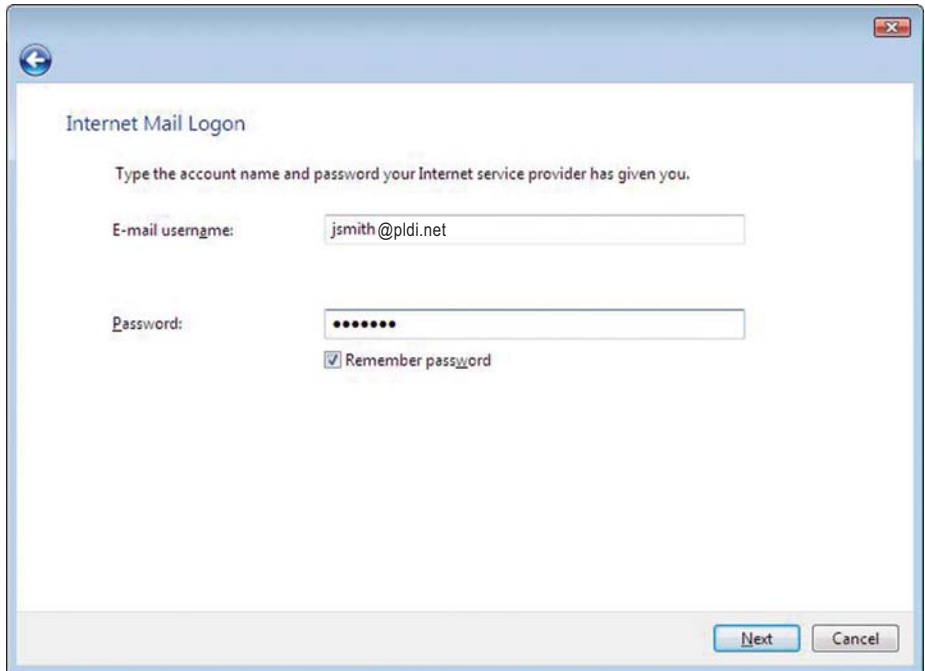
[Where can I find my e-mail server information?](#)

Next Cancel

## Windows Mail Set Up for Windows Vista Users

---

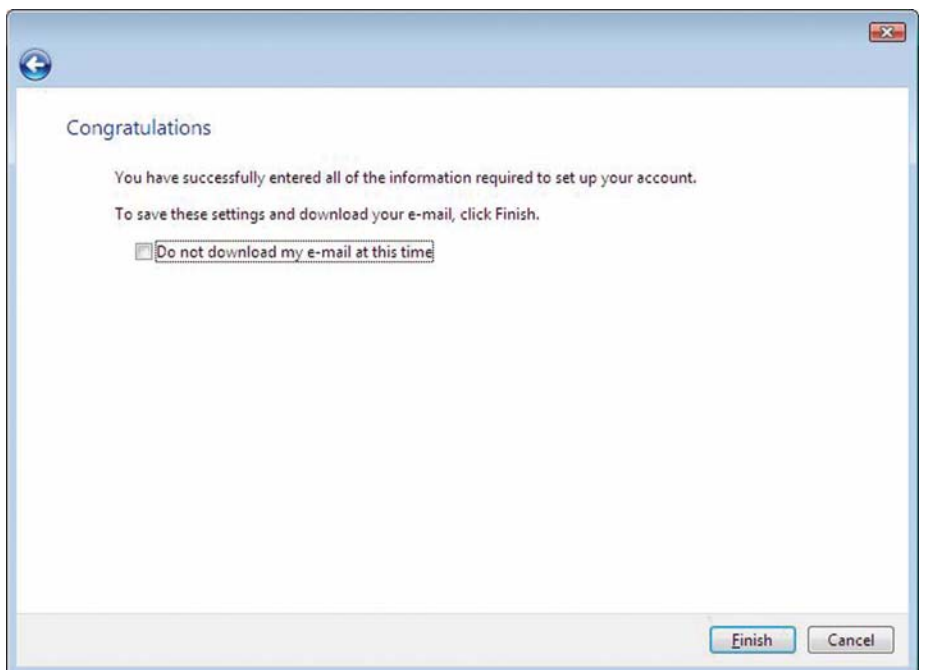
5. Your next step will be **Internet Mail Logon**. Enter your **E-mail username** followed by **@pldi.net** and your **Password**. Also, if you would like **Windows Mail** to remember your password for you, check the box **Remember password**.



The screenshot shows the 'Internet Mail Logon' dialog box. It has a blue header bar with a back arrow on the left and a close button on the right. The main area contains the following text and fields:

- Title: Internet Mail Logon
- Instruction: Type the account name and password your Internet service provider has given you.
- E-mail username: A text box containing 'jsmith@pldi.net'.
- Password: A text box containing seven dots.
- Remember password: A checked checkbox.
- Buttons: 'Next' and 'Cancel' buttons at the bottom right.

6. On this screen click **Finish** to exit the **Windows mail wizard**.

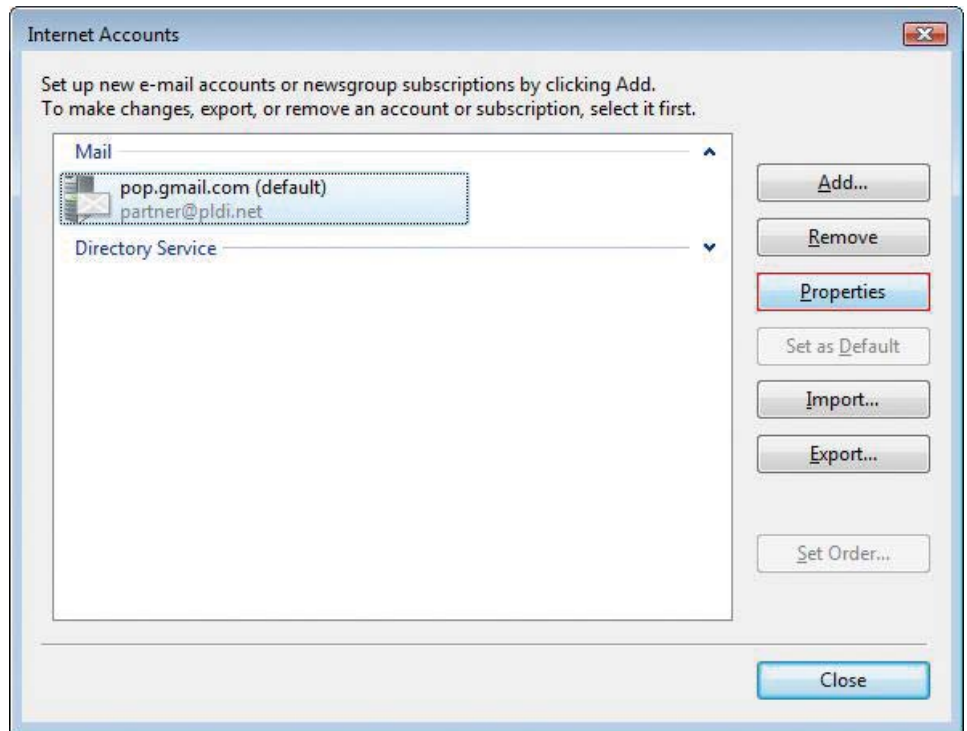


The screenshot shows the 'Congratulations' dialog box. It has a blue header bar with a back arrow on the left and a close button on the right. The main area contains the following text and options:

- Title: Congratulations
- Message: You have successfully entered all of the information required to set up your account. To save these settings and download your e-mail, click Finish.
- Option: A checkbox labeled 'Do not download my e-mail at this time' which is currently unchecked.
- Buttons: 'Finish' and 'Cancel' buttons at the bottom right.

## Windows Mail Set Up for Windows Vista Users

7. Now click on **Properties** and the Properties screen will come up.



8. In this step click on the **Advanced** tab at the top. The **Outgoing mail (SMTP)** is **465**. Check the box on the following line next to **This server requires a secure connection (SSL)**.

The **Incoming mail port** is **995** and also check the box on the following line next to **This server requires a secure connection (SSL)**.

After you complete this step, click **OK**.

